



Hamilton Elementary School

2089 Rose Villa, Pasadena, CA 91107



Campus Overview

Year Built: (established 1923) 1929 & 1950
Site Size: 5.0 Acres

Alexander Hamilton Elementary School is a "Leader In Me" (LiM) school, an improvement model that supports the leadership and relationship building talents of each student. Teaching methods are intertwined in all areas of education starting at kindergarten, and the talents of each student are embraced and positively reinforced to develop leadership skills through responsibility and establishment of goals. Another signature program at Hamilton is the STEAM (Math, Science, Engineering, Art, Techology) Academy in which students use creative problem solving and hands on experimentation to learn in math, science and computer labs. The Technology Lab is taught by a Milliken-award educator.

Recent Modernizations

Modernization Bond (1998-2008)	Addition of classroom building.
Measure TT (2008-2021)	Multi-purpose room, remodeling of kitchen, cafeteria and school auditorium
Energy-Efficient Projects (2020)	Solar Array Installation.



Our students are compassionate, creative, and filled with desire to meet new challenges and pursue creative paths to solutions.

Principal, Erika Cooper

Programs & Awards

S

T

E

A

M

Science

Technology

Engineering

Arts

Math

Leader In Me





Learner-centered environments engage students.

- Instructional spaces in a variety of sizes and shapes support engaging, participatory learning and instruction for individuals and small or large groups.
- Indoor and outdoor spaces stimulate learning and the imagination.
- Areas to display, perform, and celebrate student work support skill development in a variety of modalities.



Community and schools connect as partners.

- Spaces are adaptable and aligned to the needs of students, teachers, and families.
- School and community resources align to promote school safety for all students and families.
- Campuses foster a wide array of programs and partnerships that optimize community resources.



Accountability promotes continuous improvement.

- School facilities and interior layouts can accommodate change over time, to meet evolving educational needs and requirements.



Creativity and collaboration foster learning.

- School spaces facilitate collaboration between, among, and within groups.
- Students have easy access to tools and resources for learning in any space.
- Spaces can adapt to the scale and context of any learning endeavor.



Flexibility and adaptability are key to our success.

- Spaces are constructed to serve current and future demands.
- Learning environments support multiple learning styles, programs, student populations, and pedagogical approaches.
- Whenever possible, classroom design supports general rather than "specified" uses, so as to adapt easily if the need arises.



Sustainability is vital.

- Shared ownership is visible via spaces that are connected and transparent.
- Students, teachers, parents, and community help define and contribute to their school's visual, spatial, and architectural identity.

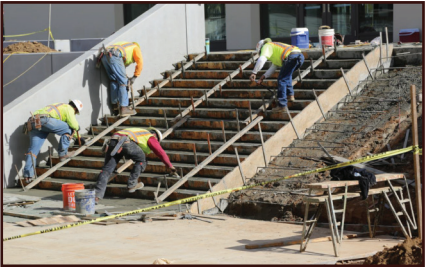
1. Technology Infrastructure

Provide ongoing effective technological integration of audio visual and tablet tools to enhance connectivity, classroom mobility and encourage student centered project-based learning.



2. State Mandated

Upgrades to code items including Accessible, AB 300, Net-Zero Performance and Fire Life & Safety requirements. Upgrades to pending heating, ventilation and air conditioning, plumbing, electrical, roofing, painting, and fencing items.



3. Safety & Security

Removal of hazardous materials. Improvements to student drop-off, parking, exterior lighting, fencing, fire alarms, emergency lighting, intrusion alarms, and controlled school entry security cameras.



4. Path to Zero Net Energy & Water Conservation

Incorporation of Energy Efficient systems to existing structures and new construction. Use of recycled water for irrigation.



5. Program Improvements

New construction for specific signature program for each campus. Upgrades to equipment to existing signature program spaces.



6. 21st Century Learning & Flexible Classrooms

Addition of flexible furniture, storage systems, and Audio Visual equipment to accommodate diverse learning methods.



7. Modernization & Reconfiguration

Upgrades to finishes, casework, doors, and windows. This includes auditorium and specialty classrooms equipment upgrades. Reconfiguration of interior layout to support new programming.



8. Physical Education & Play Area Improvements

Modernization, reconfiguration and/or addition of athletic facility programs to support the needs of the Physical Education & Athletic Programs.



9. Multi-Purpose Spaces & Food Service Improvements

Modernization, reconfiguration, and/or addition of multi-purpose spaces. This includes modernization of cafeterias, serveries, and multi-purpose spaces.



10. Site Improvements

Improvements to site utilities and service lines. Upgrades to paving, landscaping, curb appeal, turf fields, and exterior play areas.



11. Outdoor Learning Classrooms & Gardens

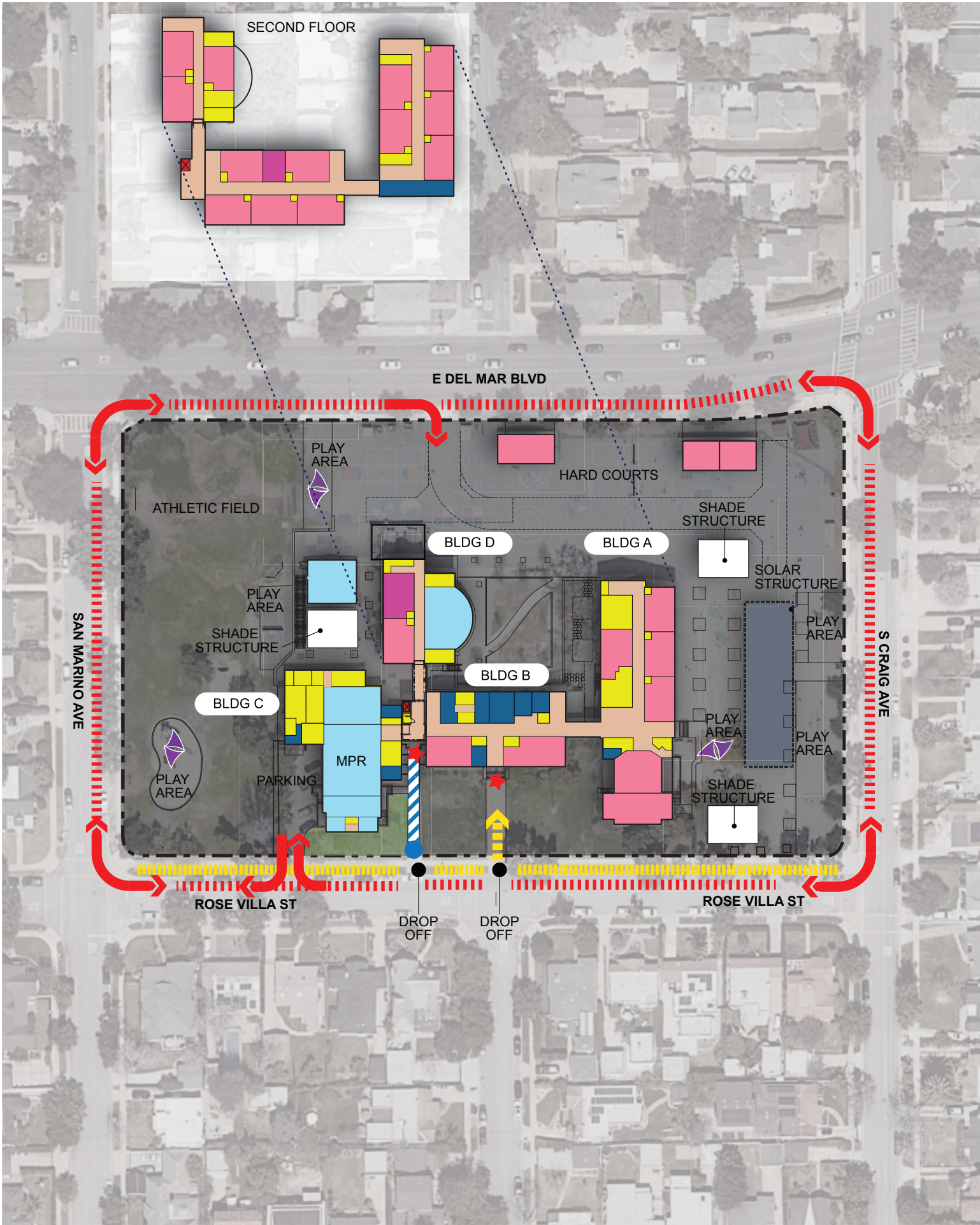
Addition or improvement of outdoor student learning programs, gardens, and gathering areas.



12. Intelligent New Construction

New permanent 21st century building construction that enhances campus energy performance, reduces maintenance, replaces legacy infrastructure, and/or temporary portable structures.





- Legend**
- ★ Entry
 - Drop-off
 - School Bus Zone
 - Accessible Entry
 - Property Line
 - Vehicle
 - Pedestrian
 - Accessible Route
 - School Bus Zone
 - Solar Panels
 - Classrooms
 - Specialty Classrooms
 - Multi-Purpose Space
 - Support Space
 - Administration & Faculty
 - Outdoor Learning
 - Circulation
 - Existing Play Structure



Hamilton Elementary School

Assessment Summary

1. Technology Infrastructure

- Existing Network and Technology needs replacement

2. State Mandated Items

- Roof replacement as needed
- Upgrade building finishes, lighting, HVAC plumbing system, and hardware
- Extensive ADA upgrades are required to make buildings accessible including entrances, restrooms, drinking fountains, detectable warnings & signage
- HVAC terminal unit replacement as needed
- Handrail replacement (as needed) at existing exterior/ interior stairs
- Existing central plant may need replacement

3. Safety & Security

- Fencing & gates throughout campus are in need of replacement.
- Add privacy screen to Del Mar Blvd. fence
- Need security system with entryway sensors and campus security cameras

4. Path to Zero Net Energy & Water Conservation

- There is a mixture of light fixture types, including LED, T8 and T12.
- Existing irrigation system is a conventional overhead spray irrigation system

5. Signature Program Improvements

- School lacks STEAM labs and maker spaces

6. 21st Century Learning & Flexible Classrooms

- Existing classrooms are traditional lecture layouts.
- Current furniture, audio visual and technologies do not allow for flexible teaching strategies

7. Modernization & Reconfiguration

- Replace windows and window shades as needed
- Interior repainting as needed
- STEAM labs and maker spaces are needed

8. Physical Education & Play Area Improvements

- Replacement of A.C. pavement throughout the back campus is needed
- 3 out of 4 existing play shelters require replacement

9. Multi-Purpose Spaces & Food Service Improvements

- N/A

10. Site Improvements

- A.C. pavement throughout campus is in need of repair or replacement.
- Replant landscaping and dead trees & replace irrigation throughout campus, including play fields
- Remove and replace pavement & landscaping in central courtyard.
- Re-design landscape, walkways, seating and other amenities
- Campus lacks adequate on-site parking. Parking needs assessment required.
- Outdoor space at East side campus (where new solar panel canopy is located) should be re-planned and re-constructed with landscaping and play areas

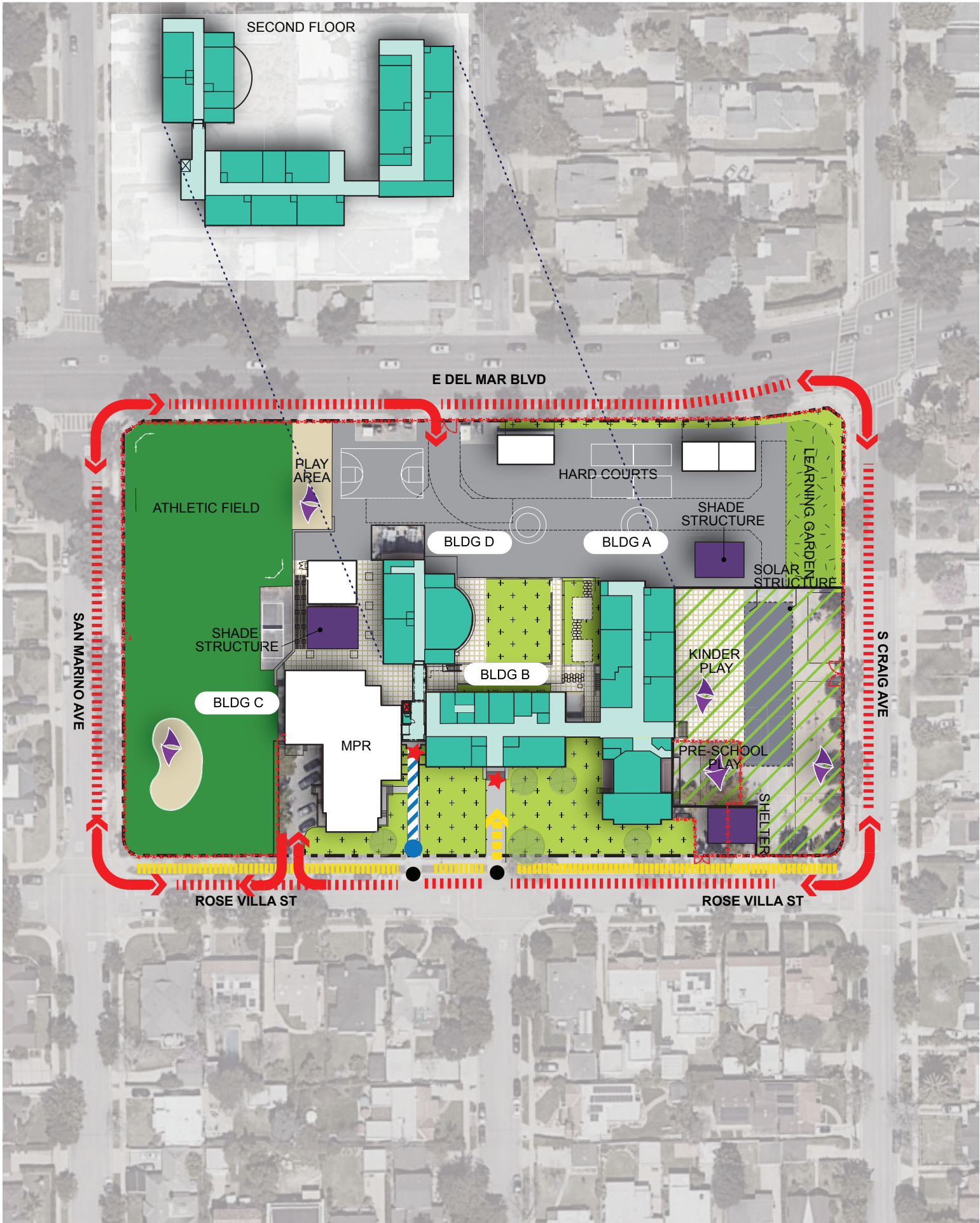
11. Outdoor Learning Classrooms & Gardens

- The school needs exterior learning areas and/or garden areas

12. Intelligent New Construction

- Existing Buildings are not Intelligent

Assessments, proposed improvements, and cost herein do not reflect actual approved work to be done, nor constitute an approved project scope.



Hamilton Elementary School



Suggested Improvements

1. Technology Infrastructure

- Upgradde Network and Technology Infrastructure

2. State Mandated Items

- Roof replacement as needed
- Upgrade building finishes, lighting, HVAC plumbing system, and hardware
- Extensive ADA upgrades at entrances, restrooms, drinking fountains, detectable warnings & signage
- Handrail replacement (as needed) at existing exterior/ interior stairs
- Assessment of central plant to determine replacement

3. Safety & Security

- Replacement of chain link fencing / gate / hardware & retaining wall as needed
- Provide security system with entryway sensors and campus security cameras

4. Path to Zero Net Energy & Water Conservation

- Replace existing Restroom fixtures with low water
- Replace interior lighting fixtures with LED & update ballasts/fixtures with LED
- Use recycled water for irrigation

5. Signature Program Improvements

- Provide a new STEAM lab/ maker space

6. 21st Century Learning & Flexible Classrooms

- New classrooms layouts and updated infrastructure should allow for 21st Century teaching and learning capabilities

7. Modernization & Reconfiguration

- Replace windows and window shades as needed
- Interior repainting as needed
- STEAM labs and maker spaces are needed

8. Physical Education & Play Area Improvements

- Replacement of A.C. pavement throughout the back campus is needed
- Provide new play structures and swingsets

9. Multi-Purpose Spaces & Food Service Improvements

- N/A

10. Site Improvements

- Replacement of A.C. pavement throughout campus
- Replant landscaping and dead trees & replace irrigation throughout campus, including play fields
- Parking assessment and provision as required
- Renovate Outdoor space at East side of campus with landscaping and play areas

11. Outdoor Learning Classrooms & Gardens

- Replacement of pavement & landscaping in central courtyard
- Re-designing of landscape, walkways, seating and other amenities

12. Intelligent New Construction

- Addition of new Intelligent facilities to support school programs as applicable





ESTIMATED ASSESSMENT COST		
Scope of Work Categories		Total
1	Technology Infrastructure	\$556,002
2	State Mandated (Access / ADA Compliance, Fire-Life-Safety and Structural)	\$5,004,018
3	Safety & Security	\$333,601
4	Path to Zero Net Energy & Water Conservation	\$222,400
5	Signature Program Improvements	\$556,002
6	21st Century Learning & Flexible Classrooms	\$1,112,004
7	Modernization & Reconfiguration	\$1,112,004
8	Physical Education & Athletic Facility Improvements	\$556,002
9	Multi-Purpose Spaces & Food Service Improvements	\$1,112,004
10	Site Improvements	\$2,776,950
11	Outdoor Learning Classrooms & Gardens	\$490,050
12	Intelligent New Construction	\$556,002
	Subtotal Estimated Assessment Cost	\$14,387,040
	Soft Project Cost (20%)	\$3,165,148
	Hard & Soft Costs Subtotal	\$17,552,188
	Escalation (Averaged, 5% per annum to midpoint of construction)	\$1,899,089
	Overall Contingency (10%)	\$1,438,704
	Total Estimated Assessment Cost	\$20,889,981



How Projects will be Established

WE ARE HERE

Step 1 Create Needs Assessments for Each Site

Step 2 Create Facilities Master Plan

Step 3 Establish Priority Areas

Step 4 Establish Project List

Step 5 Prioritize Project List

Step 6 Begin Project Planning and Construction

***Public input will be requested throughout the process**